



24/7 Customer Support



support@techmatte.com

www.techmatte.com

STAY CONNECTED



@TechMatte



@TechMatte



/TechMatte



@tech.matte



OneTouch

Installation Guide

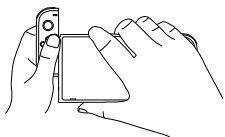
Scan Me



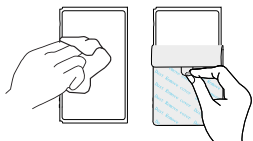
or visit

www.TechMatte.com/install/OT-NIN

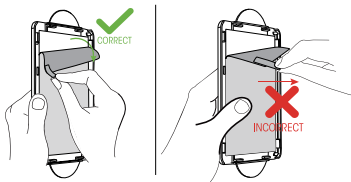
- 1** Detach both Joy Con from your Switch.



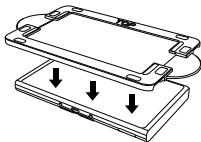
- 2** Begin by cleaning the screen the wet wipes and the Microfiber Cleaning cloth, remove any dust with the dust removal cover.



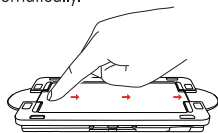
- 3** Pull the tab downwards to remove the mask film. ***Note: Pull DOWN! Pulling OUTWARDS may dislodge the screen protector from the tray!**



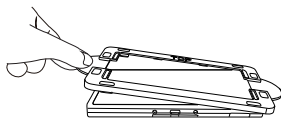
- 4** Place the application tray over your Switch. The top of the tray aligns with the top of your Switch.



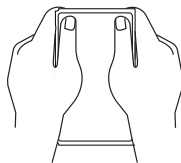
- 5** Press the screen protector on the end gently as shown in figure. Slide over to the other end slowly. The screen protector will attach and adhesive will spread automatically.



- 6** Remove the application tray from the device by lifting it off of the device. The blue film will come off with the tray.



- 7** If needed, gently push any air bubbles towards the edges of the screen protector using your fingers or the cleaning cloth



- 8** Re-attach Joy Con and enjoy your Switch.

